



Chemical Feed Systems



Chemical Feed Skids with Electrical Control Panels

We recognize the importance of accurate, reliable chemical feed to the success of your water chemical treatment programs. Proper application of the chemical products can significantly improve the efficiency of your operation. We offer pre-packaged chemical feed systems that incorporate necessary components assuring easy installation, startup and reliable chemical feed.

Chemical feed systems combine in one platform a tank for mixing and storing chemical solutions, a mixer, electronic and diaphragm metering pump to inject the chemical solution, suction and relief piping, valves, instruments, and electrical panel. Standard pre-engineered systems are available, as well as customized systems with equipment and features specified by the user.

- **Tank materials:** polyethylene, stainless steel, fiberglass, carbon steel or overpack (steel tank with polyethylene liner and cover).
- **Tank sizes:** 10 to 4000 gal.
- **Mixer:** per customer request.
- **Chemical injection:** from 0 to 1000 gal/h at up to 3500 psig.
- **Piping material:** SS, Alloy 20, PVC, CPVC, PFA, CS, threaded or welded connections.
- **Instruments:** tank level control with relay outputs and 4-20 mA signal, valves, strainers, pressure or differential pressure gauges, pulsation dampeners, calibration cylinders, flow meters, back or relief pressure valves.



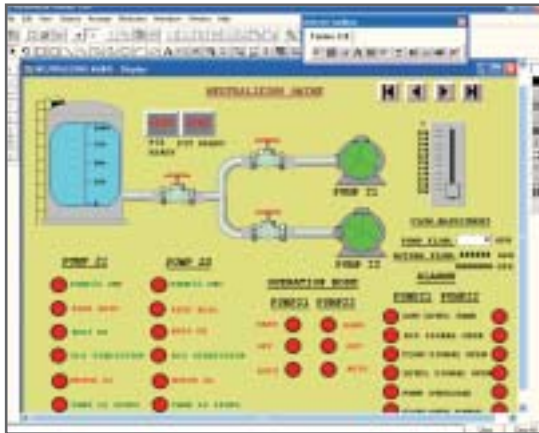
Aqueous Ammonia Unloading Platform

- **Electrical panel:** manual and auto mode operation, PLC Control, HMI, interface with customer DCS, all hazardous area classifications.
- **Skids:** designed to the latest codes and standards including ASME, AWS, API, OSHA, CSA, IEC. Materials: CS, SS, plastic materials

Chemical Feed Systems



Electrical Control Panel



HMI Screen



Ammonia Forwarding Skid

- The pre-assembled and pre-wired packaged skid system has been designed to efficiently and precisely inject liquid chemical across an extensive range of applications and operating conditions.
- Fully integrated controls provide for greater ease of operation, less maintenance and greater reliability.
- As a pre-packaged chemical metering pump system with integrated controls, the system configuration enables simple startup and operation by the user.
- The system features corrosion-resistant materials for all wetted components in the single and multiple-pump system arrangement. The fully integrated controls provide for automated operations, alarm indication and system shutdown.
- Flow proportioning control and auto switchover for multi-pump systems are available.
- Other optional features include alarms for low tank level, tank mixer and system shutdown.
- The chemical feed systems can be used in hypochlorite, caustic, sulfuric acid, oxygen scavenger, phosphate, corrosion scale inhibitor, demulsifier, neutralizing amine, dispersant, and aqueous ammonia applications.